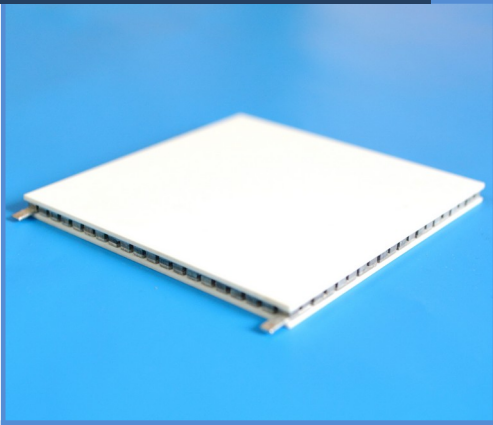




Power Generating Modules

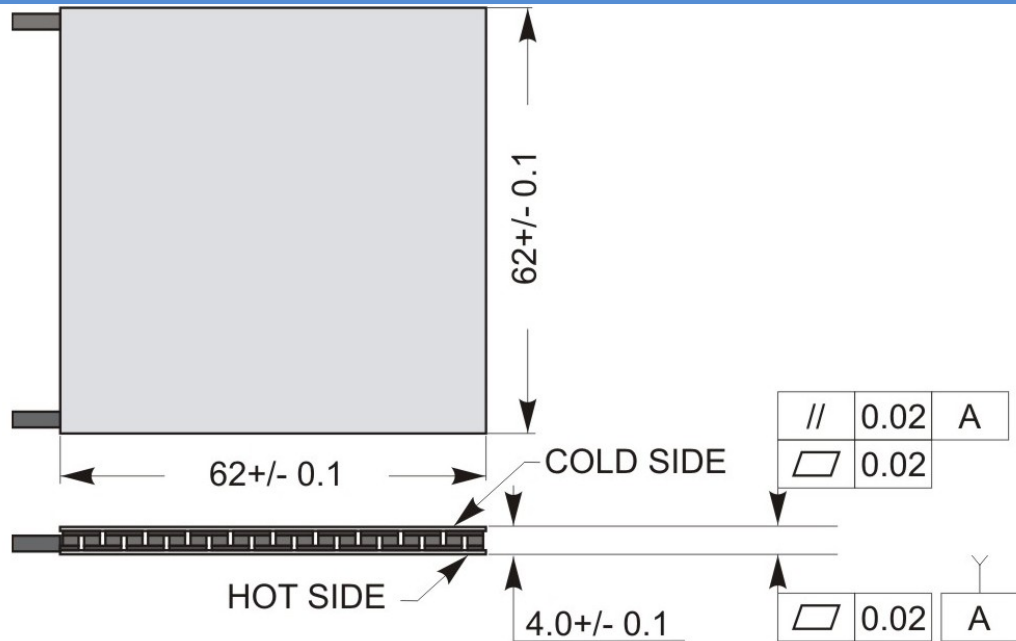
PGM-32-200

ENGINEERING & PRODUCTION

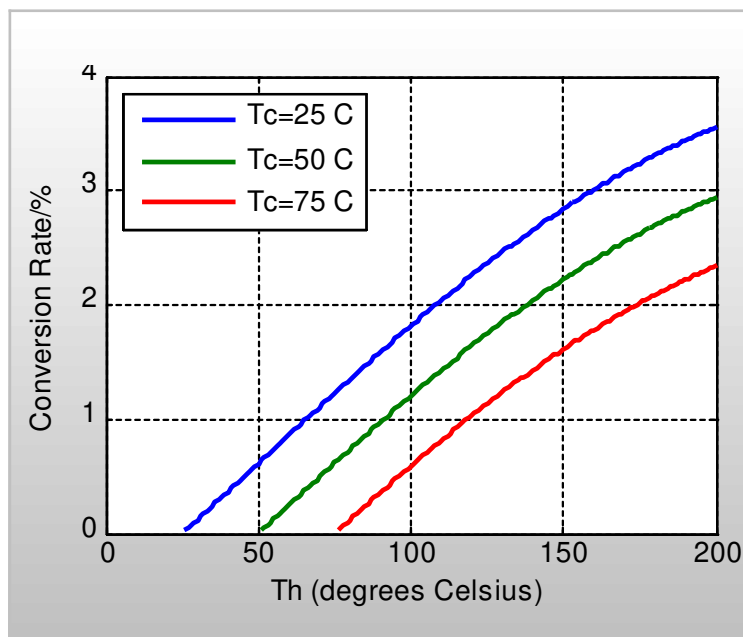


Performance specifications		
Hot Side Temperature, C	200	-5
Cold Side Temperature, C	50	±5
Thermal conductivity, W/K	5.3	0.1
Heat Flux, W	794	10
Power, W	23.4	Min.
Load Voltage, V	5.5	±0.2
Internal Resistance, Ohm	1.3	±0.1
Current, A	4.25	±0.1
Opened Circuit Voltage, V	11.0	±0.5

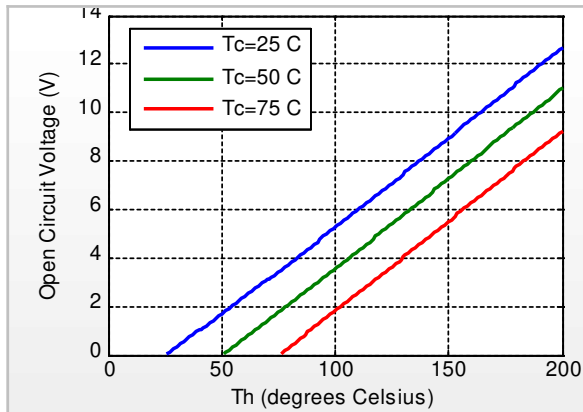
Drawing



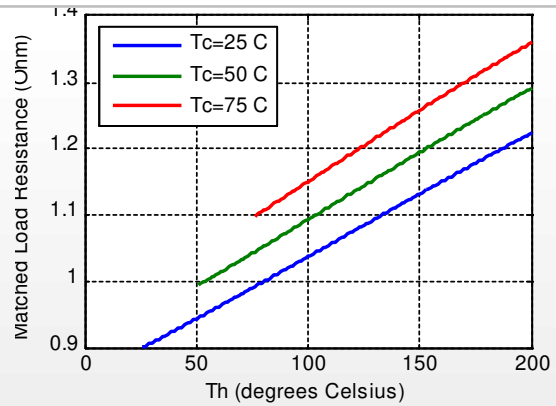
Conversion Rate of the modules Vs Th under various Tc



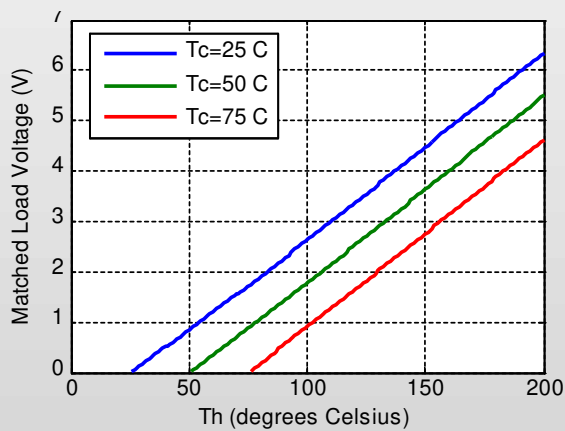
Performance Curves of the Module PGM-32-110



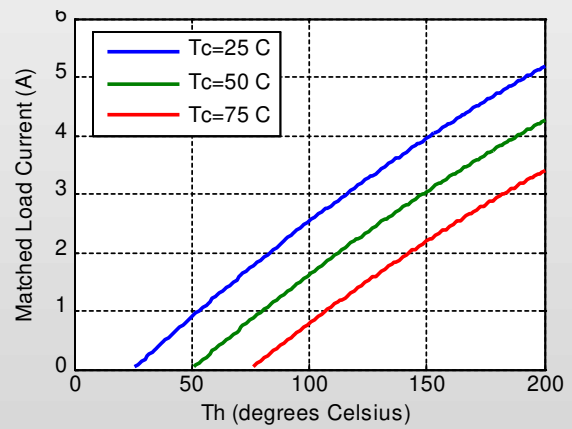
The chart for open circuit voltage Vs Th under various Tc



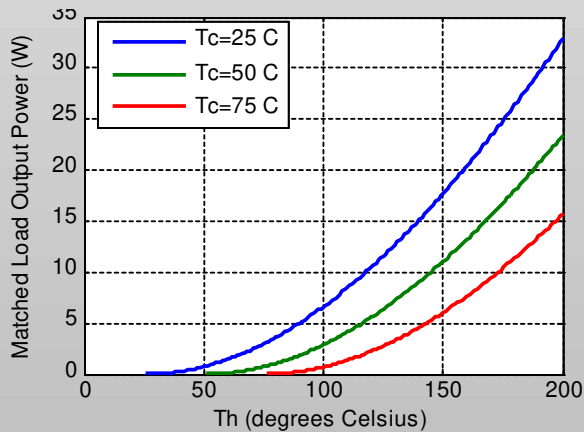
The chart for matched load resistance Vs Th under various Tc



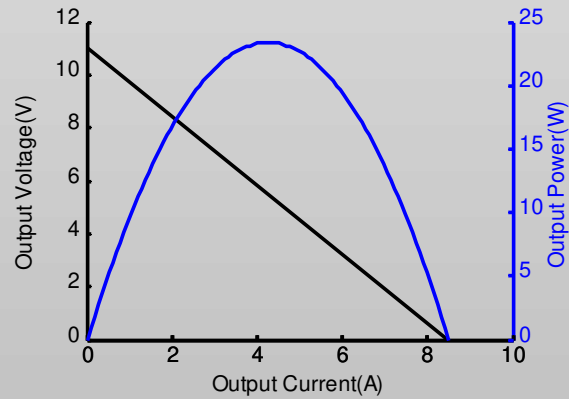
The chart for matched load voltage Vs Th under various Tc



The chart for matched load current Vs Th under various Tc



The chart for matched load output power Vs Th under various Tc



The chart for output voltage and output power Vs output current under Th=200 C and Tc=50 C

Orders: main@interm-info.com

Phone: +380 372 542650/+380 50 3381021